

Settop M1 - ISTConnect account and register the device

March 2021

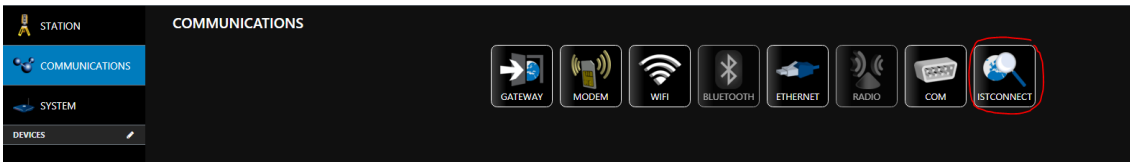
How to create an ISTConnect account and register the device

By default, the device is not registered at ISTConnect Service. You need an account for registering it. You can have more than one device registered in the same account.

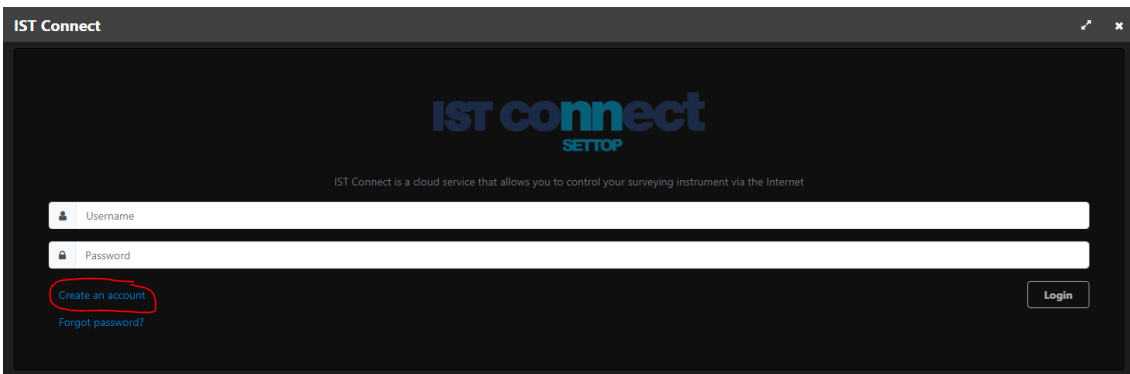


The red dot indicates that the service is disconnected

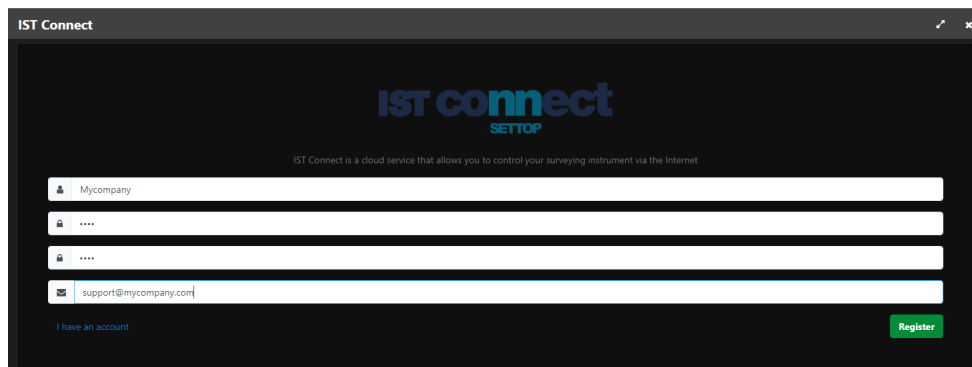
1. Go to **Communications** → **IST Connect**



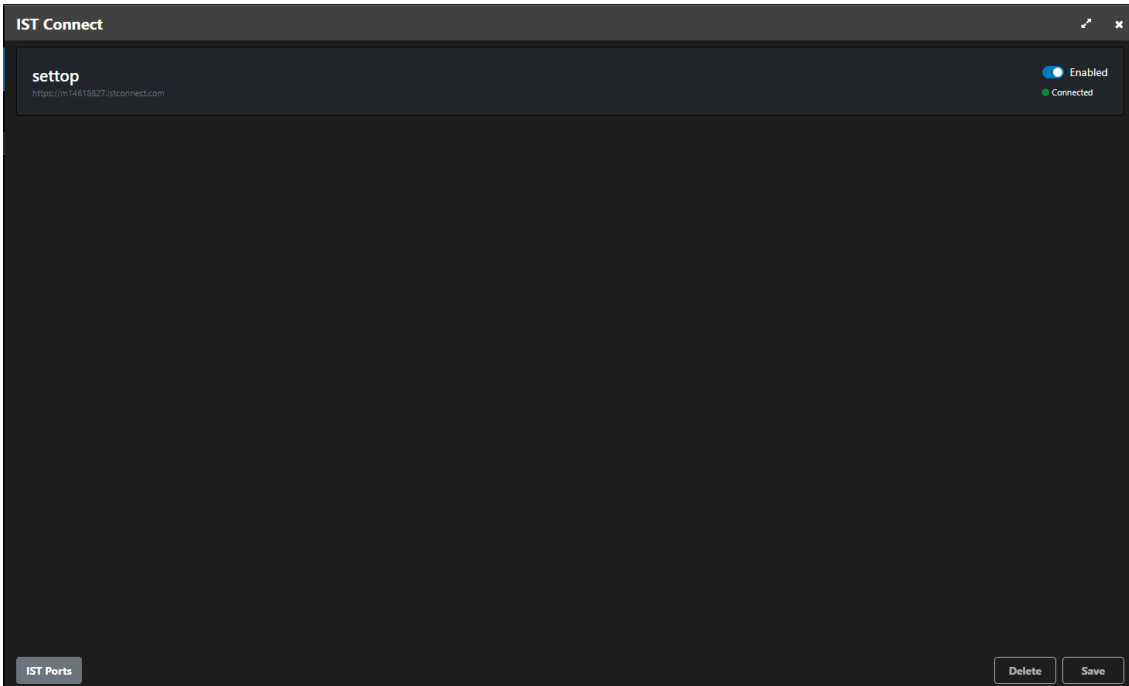
2. If you don't have an account, Press *Create an account*. If you have one, **Log In**



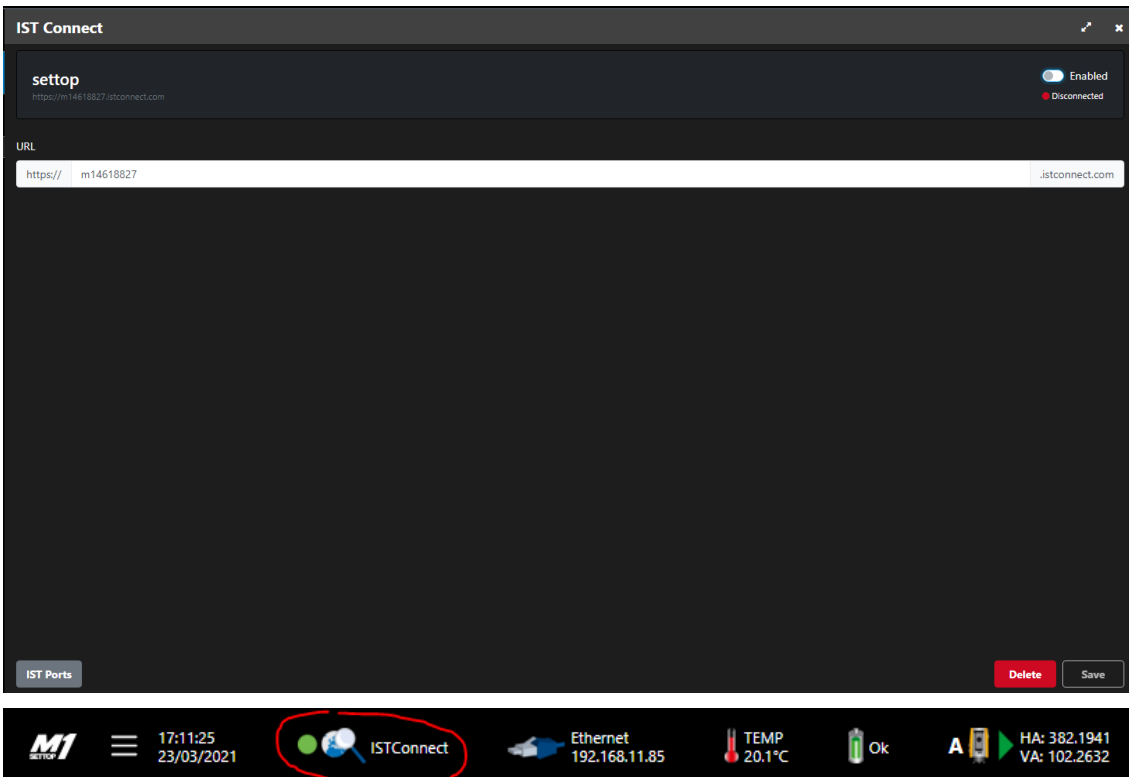
3. Key in a username, one password and email where the notification of the activation will be sent and press **Register**



- After register, you will have an account and the device will be registered with the serial number, the service will be **Enabled and Connected**



If You want, You can change the name Disconnecting and the URL will be editable. Press Save for updating the name.



5. Now, You can go to web browser and key in the selected URL

